

After Restoration

Replanting and Restoration

Ecological Patterns and Processes

HABITAT

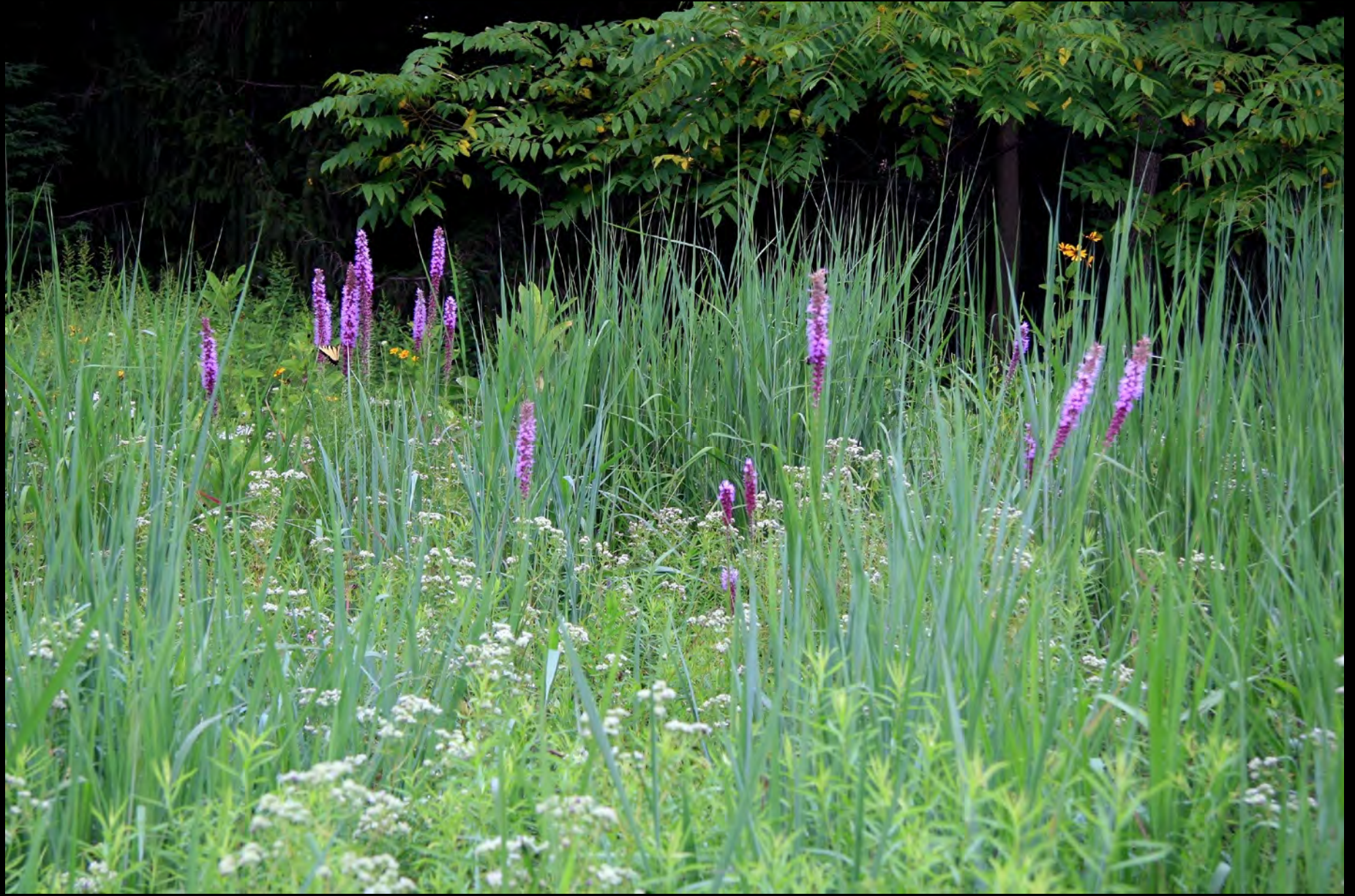








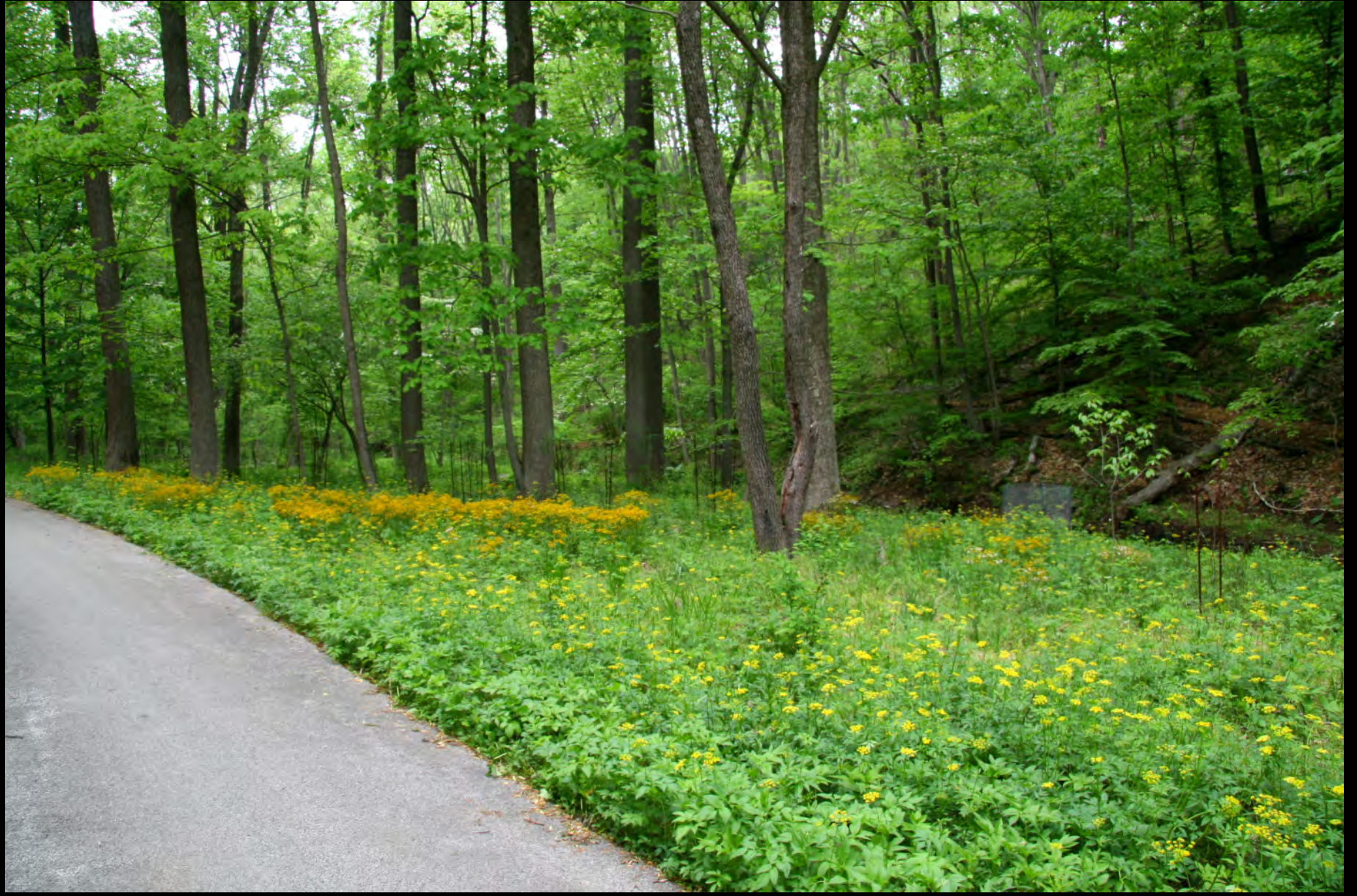
PLANT COMMUNITIES



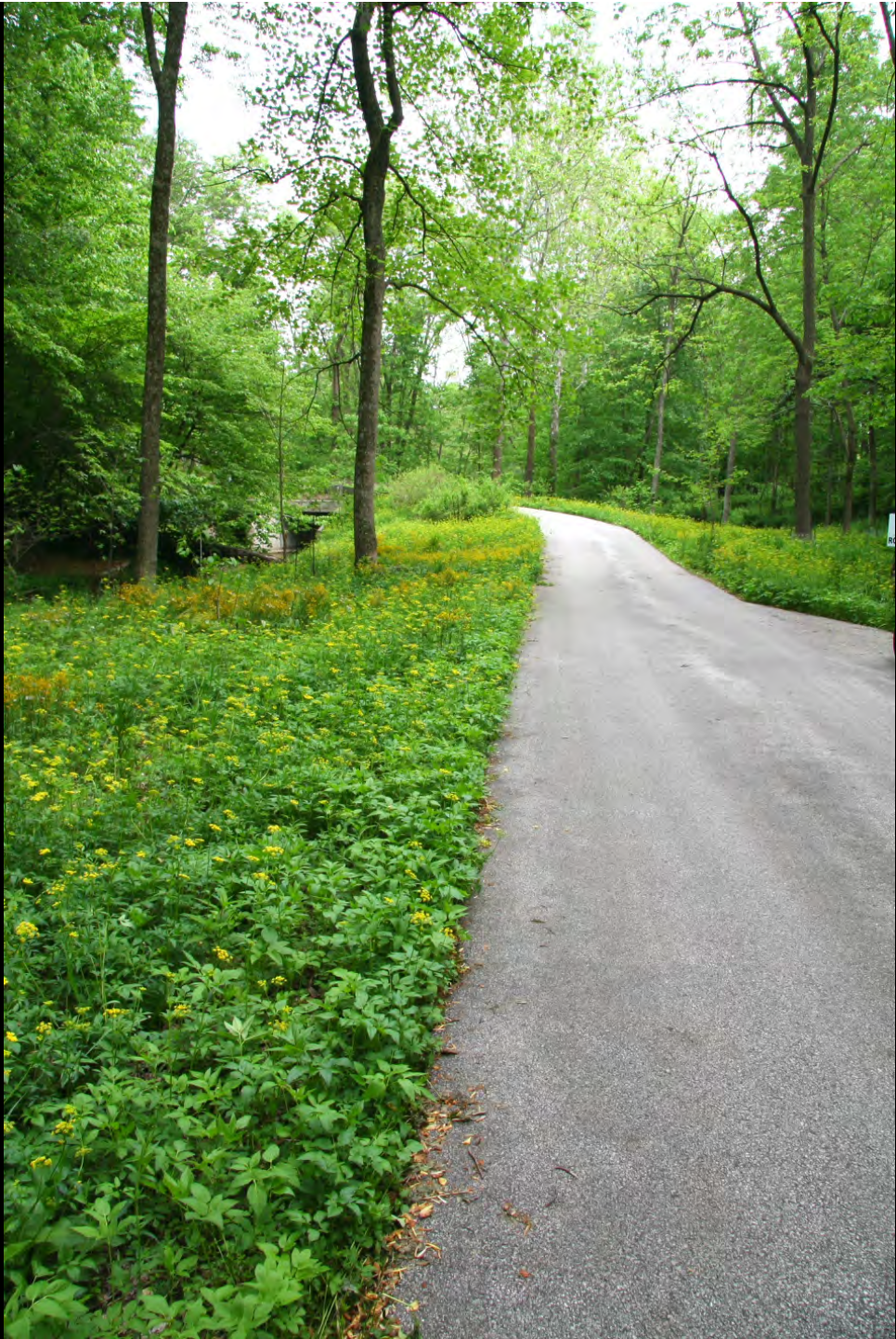




COMPETITION AND VEGETATIVE STABILITY







NATURAL SUCCESSION





How Do We Incorporate Ecological Processes?

DESIGN

*Planning for Plant Compositions that
Change Over Time*

























Strasburg Park



Strasburg Community Park

Symbol Legend

- Depression/Berms
- Depression / Lower Bank
- Upland and Upper Depression Bank
- Woodland Edge
- Upland Woodland
- New York Ironwood
- Common Ice Pine Wood
- Upland Pine
- Upland Redwood



Complete Planting Plan

Larry Weaner Landscape Design
Larsen Design Associates

Strasburg Community Park

Symbol Legend

- Depression Bottom
- Depression - Lower Bank
- Island and Upper Depression Bank
- Woodland Edge
- Oak Woodland
- New York Inland
- 'Growth' for the Wood
- Cup Floor
- Thin Forest Bottom



Seeding Plan

Larry Weaner Landscape Design
Larsen Design Associates

Strasburg Community Park

Symbol Legend

- Depression Bottom
- Depression - Little Bank
- Obank and Open Depression Bank
- Wooded Edge
- Old Woodland
- New Soil Inward
- Current Ice Per Wind
- Cap Plot
- Thin Inland Sandbar



Initial Tree Planting Plan

Larry Weaner Landscape Design
Larsen Design Associates

Strasburg Community Park

Symbol Legend

- ⊗ Existing Building
- ⊗ Existing - Lower Deck
- ⊗ Existing and Upper Deck
- ⊗ Wooded Edge
- ⊗ Old Woodlot
- ⊗ New Soil Bank
- ⊗ General Jan Per Wood
- ⊗ Cop Pine
- ⊗ Thin Inland Redwood



Canopy Tree Planting Plan

Larry Weaner Landscape Design
Larsen Design Associates

Strasburg Community Park

Symbol Legend

- Depression Bottom
- Depression - Lower Bank
- Upland and Upper Depression Bank
- Woodland Edge
- Old Woodland
- New York Terrace
- Canopy for the Wind
- Cop Floor
- Thin Ground Surface



Understory Planting Plan

Larry Weaner Landscape Design
Larsen Design Associates



STRASBURG COMMUNITY PARK
MANAGEMENT PLAN & GUIDELINES
November 5, 2001

Table of Contents

I. Project Scope and Goal

II. Implementation Schedule

A. Overview

B. Detailed Implementation Schedule

1. Upland Meadows
2. Wetlands (Vernal Pond, Tall and Short Wet Meadows)
3. Shrublands
4. Savannas, Successional Woodlands, and Woodlands
5. Constructed Features - Construction Sequence and Grading
(amphitheater, path system, agricultural remnant, lime kiln, parking lot rain gardens)

III: Implementation Procedures

A. General Planting Guidelines

1. Planting Notes
2. Staking Guidelines
3. Watering Guidelines
4. General Notes

IV. Long-term Management and Procedures

A. Meadows

B. Shrublands

C. Woodlands

D. Invasive Exotic Species Control

1. Invasive Exotic Species List
2. Control Methods
3. Herbicides









PLANTING

Soil Preparation

- Tilling
- Imported Topsoil vs. Native Soil
- Amendments: Organic Material and Fertilizer
- Supplemental Nutrition





































MANAGEMENT

(Not Maintenance)

Mowing

Annual Mowing







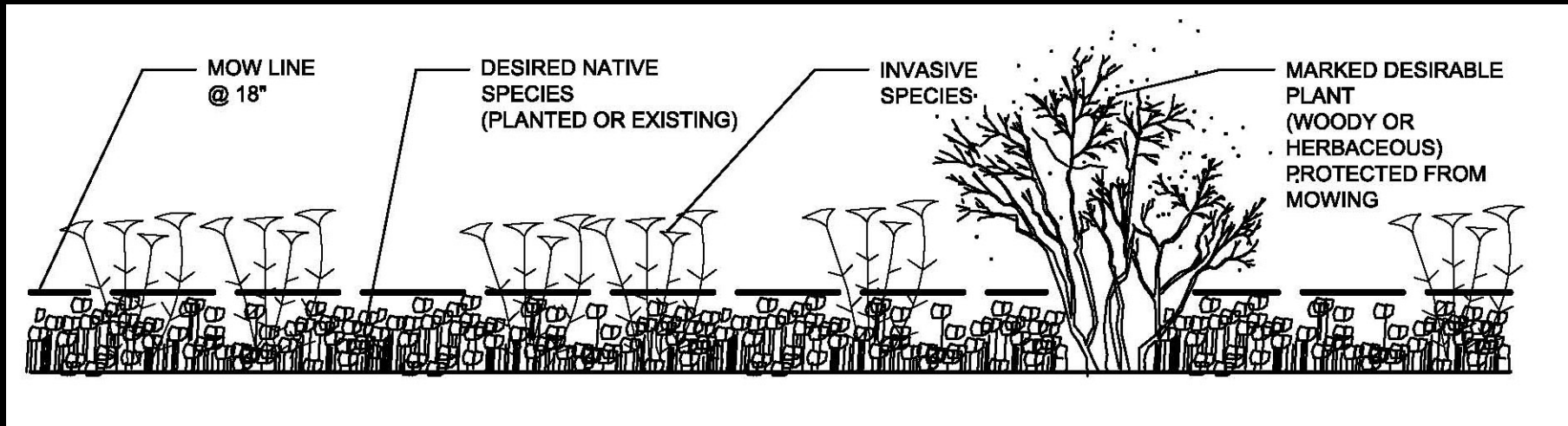
Selective Height Mowing







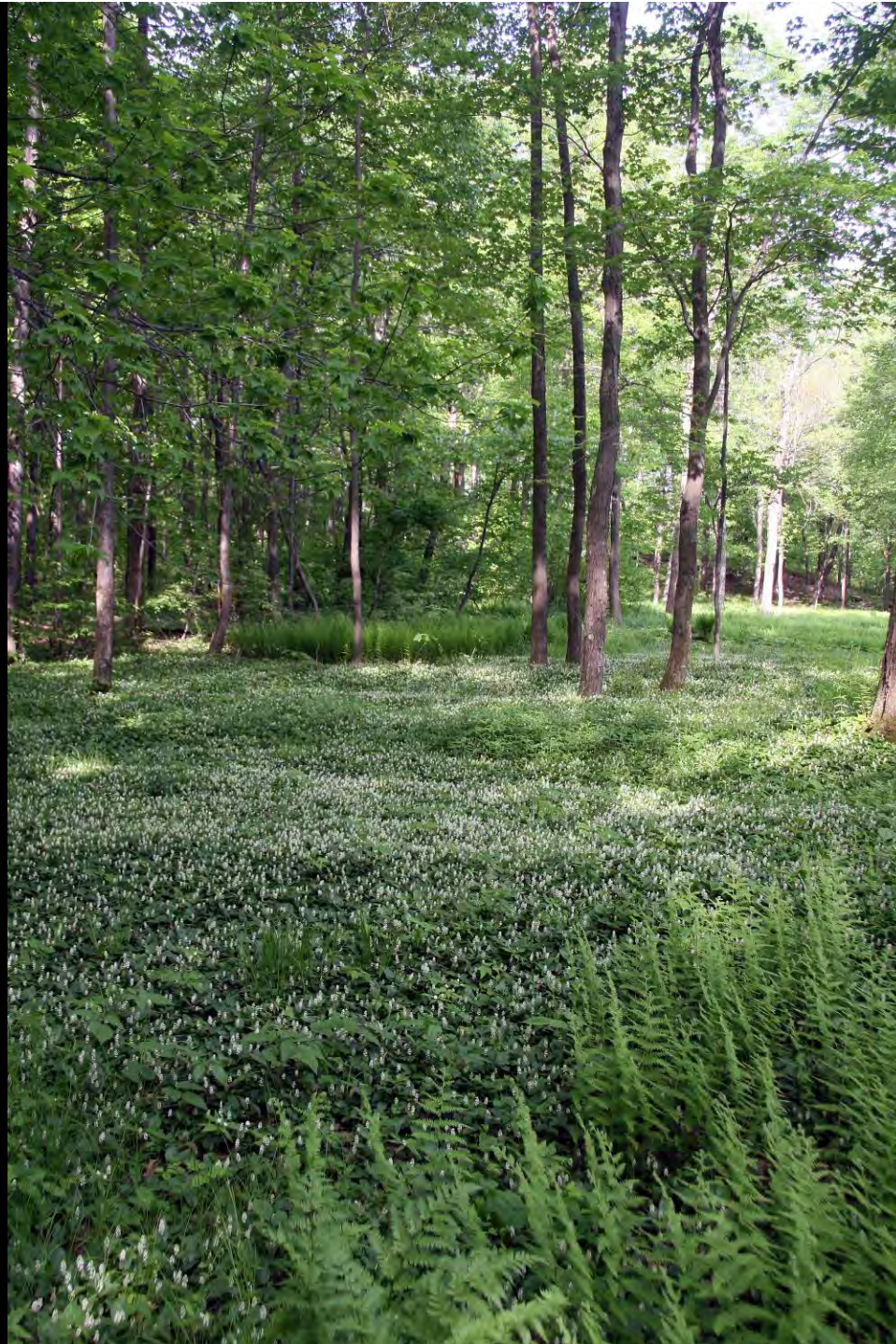














Timed Mowing











Migrating Mow Line



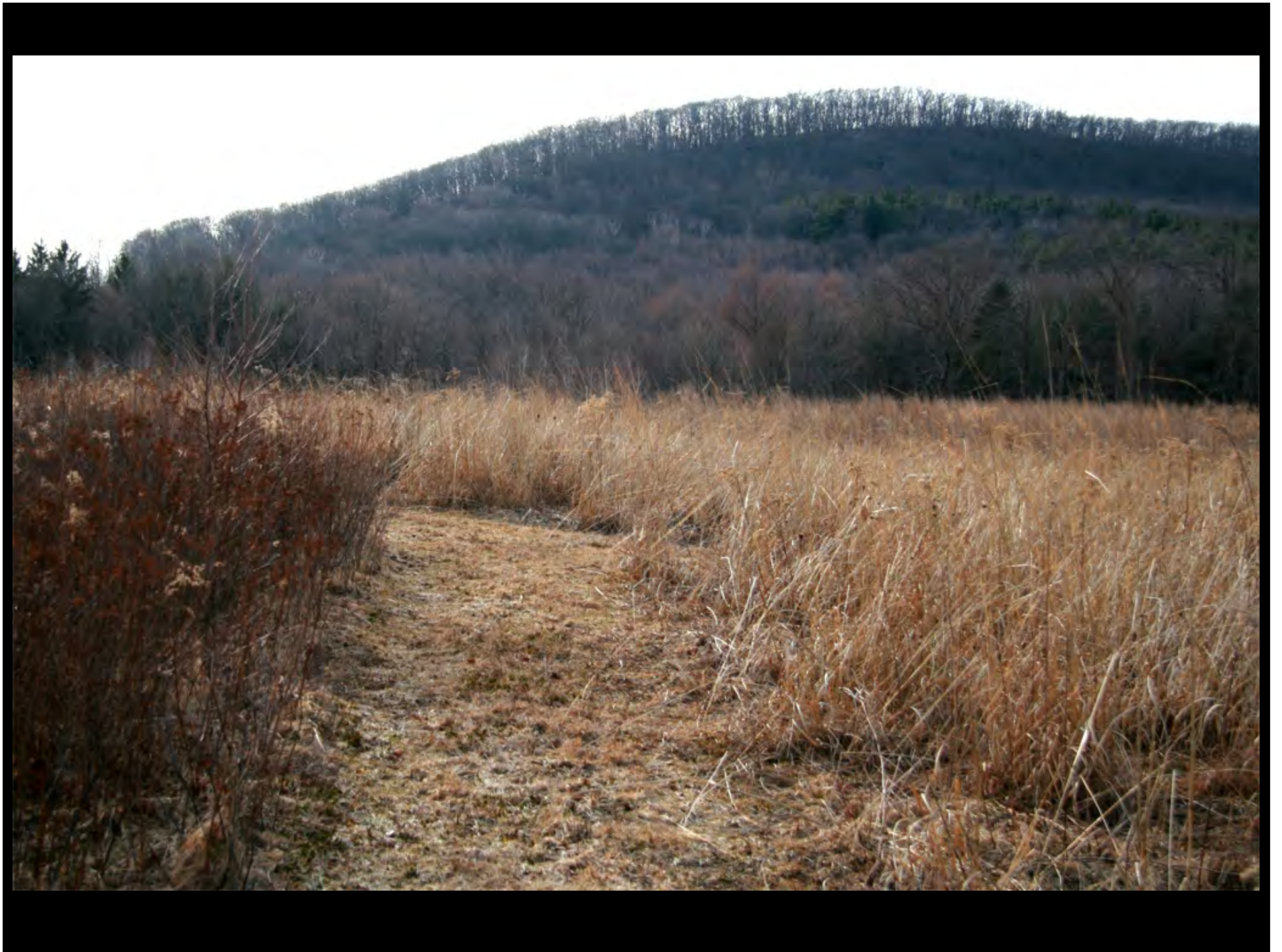














Burning



Forgotten Fires

NATIVE AMERICANS AND THE
TRANSIENT WILDERNESS

by OMER C. STEWART

Edited and with Introductions by
HENRY T. LEWIS and M. KAT ANDERSON











Mulching

*Mulch Types and Their Effect on
Seedling Germination and the
Vegetative Direction*









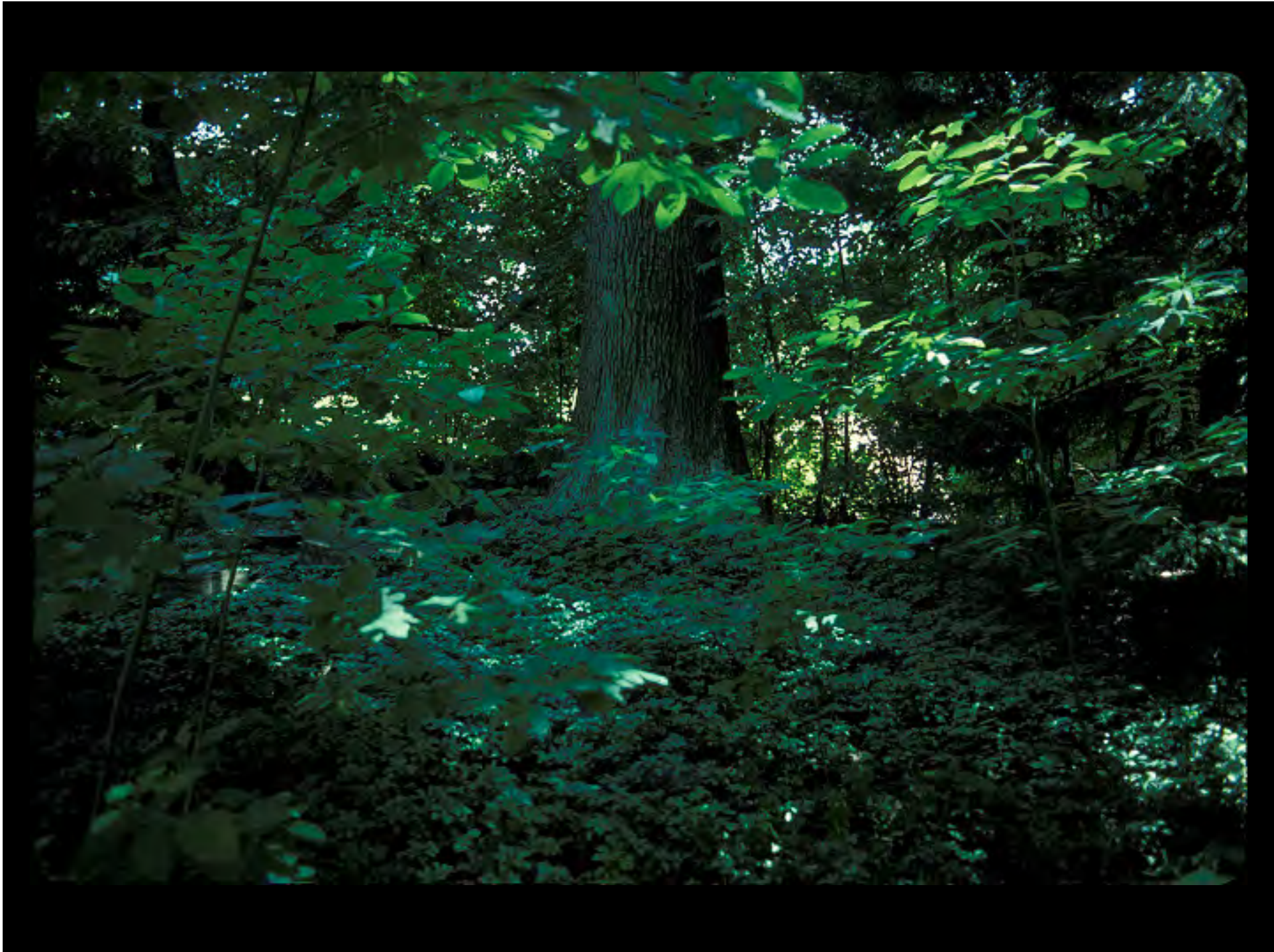












Feeding and Watering

- Fertilization
- pH manipulation
- Irrigation (Normal and Drought Conditions)







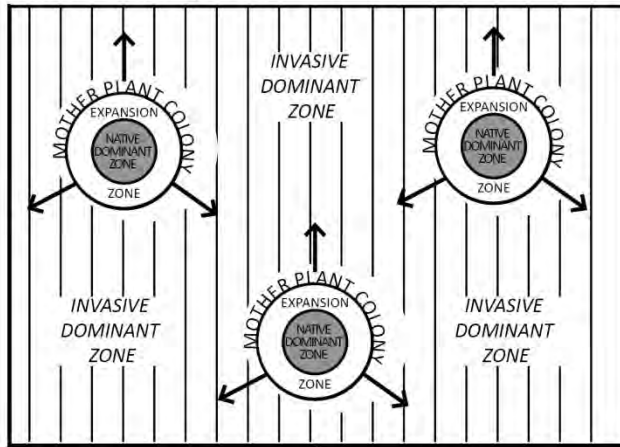






Assist Propagule Dispersal

Year One of Management



MANAGEMENT PROTOCOLS:

Mother Plants Colony:

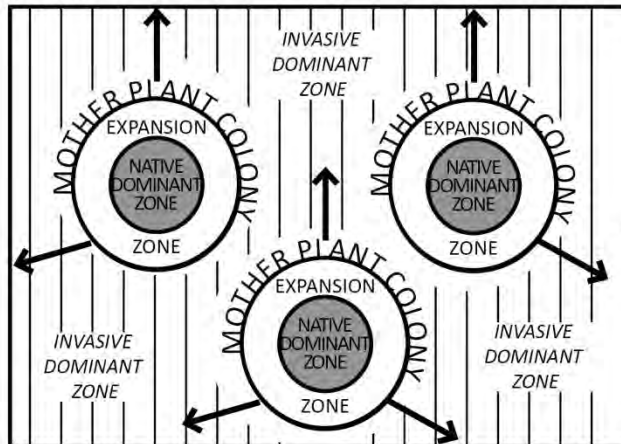
- If possible, select areas that :
 - have the lowest cover/diversity of invasive species and/or
 - provide sunlight or where it is easy to create gaps
- Install herbaceous perennials in native dominant zone.
- Disturb soil in expansion zone
- Control invasives in planted and expansion zones
- Expand planted zone and expansion zone as plants colonize

Invasive Dominated Zone:

- Flag Desirable Species
- Mow Invasives

Note: Another strategy for the Mother Plant Colony is to select areas that have the highest diversity/density of desired native plant species and manage these as the planted zones described above.

Interim



End Goal























Achieving Critical Mass































































