

Each figure in the pattern below is made of hexagons that measure 1 centimeter on each side.



Figure 1
Perimeter = 6 cm

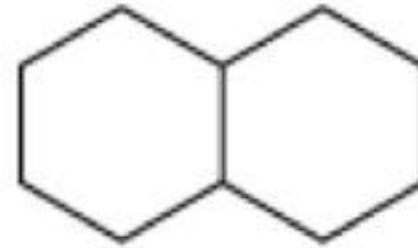


Figure 2
Perimeter = 10 cm

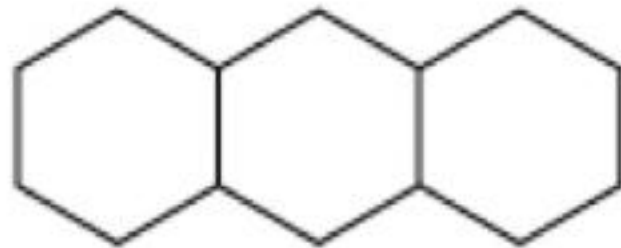


Figure 3
Perimeter = 14 cm

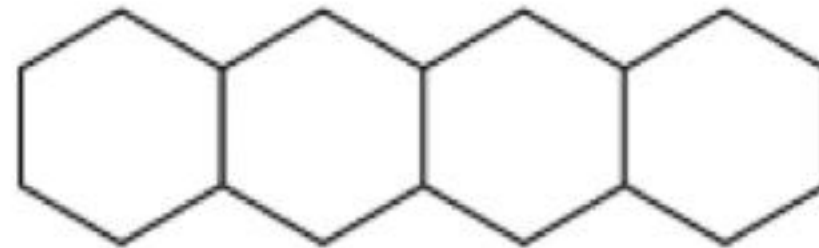


Figure 4
Perimeter = 18 cm

(1) If the pattern of adding one hexagon to each figure is continued, what will be the perimeter of the 25th figure in the pattern? Justify your answer.

(2) Extension: How can you find the perimeter of *any* figure. (A figure with n hexagons?)