

# Fall 2008

Fridays: September 19 – November 7  
OLLI Open house: Tuesday, August 19  
See page 20 for details



(OLLI) at the University of Connecticut  
Waterbury, CT

Lifelong Learning

*Providing adults 50 and over with opportunities to engage in intellectual development, cultural stimulation, and social interaction.*

# Welcome

to the University of Connecticut's Waterbury Campus!



I am honored to lead this campus whose mission is public outreach, engagement and academic quality. I offer my sincere congratulations to all of the OLLI members and volunteers who have made the Osher Lifelong Learning Institute at the University of Connecticut a success. OLLI is well known in the region, and has a story to tell nationally. Proudly, OLLI at UConn will be featured in the 2008 Volume of LLI Review, an academic journal for lifelong learning. OLLI members come from all walks of life with various demographic, educational and ethnic backgrounds. I wish success to all of the new and returning OLLI members as you pursue learning for the sheer joy of it! On behalf of the UConn Waterbury family, we look forward to sharing wonderful experiences along the path of lifelong learning.

William J. Pizzuto, Ph. D.

Director, UConn Waterbury Campus



On behalf of the Leadership Council and membership of the Osher Lifelong Learning Institute (OLLI) here at UConn in Waterbury, I extend to you warm greetings for a successful and enjoyable semester. The various OLLI committee members have worked hard over the last few months to bring you a selection of classes that will pique your curiosity, challenge your intellect and delight your senses. The OLLI Café roster of speakers is equally as interesting and I know you will be eager to join fellow members at our special OLLI events. Please make time to meet members of your Leadership Council. We are here to represent you, listen to your wants and needs and help you enjoy the learning experience together. Lifelong learning enhances our everyday lives. It gives us the opportunity to expand our knowledge, meet wonderful neighbors and just plain have fun. Have a wonderful semester!

Nancy Via

President, OLLI at UConn Waterbury



University of Connecticut

It is hard to imagine that we are entering our fourth session of OLLI at UConn—Fall 2008! We are now serving residents from over forty Connecticut cities and towns. We continue to strengthen as an Institute and grow our course offerings—in numbers and in diversity of topics. In this fall 2008 program brochure please note the following changes and improvements.

- OLLI is conducting its first ever OPEN HOUSE! This event is intended as a reunion of all former and current OLLI at UConn members and as an open invitation to your friends and the general public. This event is filled with options to excite and engage. Please plan to attend and bring many with you! Please see page 20 for details.
- OLLI has announced a ground-breaking idea—an OLLI Intergenerational Chorus, directed by the accomplished Christopher Shay. This is truly going to give OLLI a voice—if you like to sing, come to the brief audition and information session. Please see the announcement on page 17.
- OLLI is offering a new course in the form of a 14-week intergenerational course with Dr. Ruth Glasser. Seating is limited and this course starts well in advance of our OLLI Session. Consider this exciting new format! See page 6 for details. Please Note: this course begins August 28.
- OLLI has significantly more Writing and Literature courses—you asked for them and now we have them!
- OLLI is expanding its partnerships! We welcome the Connecticut Dance Theater and the Thomaston Opera House to the mix of Arts, Culture, and Entertainment Partnerships!
- OLLI now has new course time slots to accommodate our growth and success. We now have an early morning time slot (8:15 AM) for the early risers among us. The four time slots provide opportunities for more choices and less competition among so many great course offerings. Please always check meeting times and days—they do vary this session.

The world of lifelong learning at UConn is designed with you in mind—it is a place where you can come and share knowledge, ask questions, engage socially, and think about the future. Along with the OLLI staff, the OLLI Leadership Council, our Standing Committee members and OLLI volunteers, I invite you to come and enjoy!

Have a powerful and transformative year in learning—and as always, please tell a friend!

Sincerely,

Brian G. Chapman, Ed.D.

Director of OLLI



*“I have had such a wonderful experience learning again. I am 72 years old and I don’t get too many opportunities for learning.”*



# Mission

OLLI at UConn is a member-driven, community-based program offering non-credit learning experiences (courses, lectures, and special events) for mature adults who want to engage socially and intellectually with their peers as teachers and learners. Situated on an intimate, state-of-the-art university campus with traditional-age students and research faculty, OLLI also provides a fertile ground for an intergenerational interaction and exchange of ideas. The urban campus reaches out to a diverse region which provides opportunities for partnership with other cultural, educational, and arts organizations.

## ANNUAL MEMBERSHIP AND BENEFITS

Since January 2008, OLLI has had Annual Membership cycles. Memberships are either spring-fall or fall-spring. If you paid your membership fee in spring 2008, you do not have to pay the fee again for this semester. If you did not pay the annual membership fee in spring 2008, you can join today for fall 2008/spring 2009 and receive your OLLI membership card. [Fees are non-refundable!](#)

### Annual OLLI Membership is \$60 – membership benefits include

- Participation in OLLI Café Activities –“A place to lunch and learn.” Members are encouraged to bring a brown bag lunch. Coffee and fruit will be provided.
- Opportunity to register for OLLI course (\$25 each course in fall 2008, subject to change in 2009)
- UConn Waterbury Friday only parking pass (for fall 2008)
- OLLI discount book card for UConn Co-op bookstore
- Entrance to Special OLLI Events
- Discounts for Non-Osher Events
- OLLI membership card

## LEARNING ACTIVITIES

The OLLI Program currently includes short-term, non-credit courses, OLLI Café (lunch and learn) activities, and special events. Courses generally meet at the Waterbury campus once a week on Fridays.

Most programs and classes are scheduled during daytime hours. See course descriptions for specific times. Please note the newly added class times.

Brown Bag OLLI Café presentations are held from 11:30 AM – 1:00 PM in the multipurpose room.

**To join and register for Fall classes, please fill out the enclosed membership form and return by Thursday, September 4, 2008**



# Course Descriptions

FALL 2008

## NEW! OLLI INTERGENERATIONAL LEARNING

### Immigrants and the Shaping of American History

14 Sessions – Thursdays from 11:15 AM to 1:45 PM  
August 28, September 4, 11, 18, 25, October 2, 9, 16, 23, 30, November 6, 13, 20, December 4  
Room #210

#### PLEASE NOTE: This course meets on Thursday

This course deals with the origins of immigration to the American colonies and the post-colonial United States, and the interaction of immigrants and their descendants with the social, political, and economic life of the nation. It employs a combination of history, fiction, memoir and social science, texts, discussion, film viewing, and oral history fieldwork (interviews with immigrants). Members will have an opportunity to examine a multitude of voices and points of view both from within and from outside the different groups studied, including Native Americans, early European immigrants, enslaved Africans and Mexicans, turn of the century Southern and Eastern European and Asian immigrants, African American migrants from rural South to urban North, and more recent immigrations of Latin Americans, Caribbeans, Africans, Asians, and Europeans.

**Dr. Ruth Glasser**, Lecturer and Coordinator of the UConn Urban Community Studies Program will facilitate the intergenerational class. She received her PhD from Yale University in 1991. A former OLLI presenter, she is also the author of *My Music is My Flag: Puerto Rican Musicians and Their New York Communities, 1917 – 1940*; *Aqui Me Quedo: Puerto Ricans in Connecticut*; as well as a variety of articles, curriculum materials, and other publications.

*This unique course offering invites OLLI members to attend all sessions of the UConn History class which begins August 28 and takes place once a week for 14 weeks. Class presenter recommends reading two course books (although not mandatory). Enrollment is limited.*



## ARCHITECTURE

### Architectural Gems

4 Sessions – Fridays from 8:15 AM – 9:45 AM  
September 19, September 26, October 3, October 10  
Room #217 (Sept. 19 class in #119)

Waterbury and the surrounding towns have some of the best architecture in the country, as well as classic examples of New England architectural traditions from the 1600s to the present day. This course will explore many of the great area buildings through historic and contemporary photographs, maps and illustrations. The final session will also discuss issues and resources for preservation, rehabilitation, and adaptation of old buildings. This course will include a walking tour of Downtown Waterbury.

**Raechel Guest** is a graduate of the Winterthur Program (decorative art/museum studies graduate program) and has curated several exhibits at the Mattatuck Museum, including *Building Waterbury: The Art of Architecture*. She has taught Art Appreciation and Introduction to Art History at UConn-Waterbury for many years and is currently Site Administrator at the Phelps-Hatheway House in Suffield. She is the author of *Houses of the Hillside Neighborhood* and created self-guided audio tours of downtown Waterbury earlier this year for Main Street Waterbury. She is also the volunteer Chair of Main Street Waterbury's Design Committee.

## COMPUTERS

### Demystifying Personal Computers – Basic Introduction to Computers

8 Sessions – Fridays from 10:00 AM – 11:30 AM  
September 19, September 26, October 3, October 10, October 17, October 24, October 31, November 7  
Room #224

Whether you don't know how to turn the computer on, recently bought your first computer or have little experience...this class is perfect for you. It will introduce you to the "mouse" and how it works, the keyboard, the difference between hardware and software, and introduce the Internet. The course is hands-on learning. Come make a new friend and have fun – meet the mouse and its companion, the personal computer!

**Leon LeClerc** has an A.S in Business, a BS in Business Administration with minors in Psychology and Law, and is a PC Consultant, having been involved with all phases of computers for over 50 years. Returning as an OLLI presenter, Leon also teaches for the Connecticut Community College System, the City of Waterbury Education Department and private corporations and colleges.

### The Basics of Microsoft Office Word and Excel

8 Sessions – Fridays from 1:15 PM – 2:45 PM  
September 19, September 26, October 3, October 10, October 17, October 24, October 31, November 7  
Room #224

Microsoft Word: learn the fundamental techniques of Word in this hands-on class. Learn how to create, edit, format, print, save, and retrieve documents. Microsoft Excel: a dynamic spreadsheet package designed to allow users to combine number crunching and outstanding results. Learn how to create, format and print spreadsheets; entering and using formulas and functions. A working knowledge of computers is a prerequisite for this class.

**Leon LeClerc** also teaches **Demystifying Personal Computers – Basic Introduction to Computers**.

## CULTURE AND LANGUAGE

### Conversational Italian for Travel

8 Sessions – Fridays from 10:00 AM – 11:30 AM  
September 19, September 26, October 3, October 10, October 17, October 24, October 31, November 7  
Room # 210

Going to Italy? Want to feel more comfortable understanding the Italian language, mind, and lifestyle? In addition to helping members understand the language and grammar, this conversational Italian course will use multi-media tools to focus on the non-verbal (Italian) communicator, cultural differences, expectations, and Italian customs and traditions to help the traveler avoid cultural blunders.

**Connie Tripodi** has a BA in Natural Sciences from CCSU and an MBA with double specializations in Healthcare and Global Management. She was a Medical Technologist at St. Mary's Hospital and has been the administrator of a surgical practice for the past 18 years. Connie also has a gemology degree from the Gemological Institute of America, designs jewelry inspired by the

ancient civilizations, and has conducted lectures on the topic. A returning OLLI presenter, Connie speaks fluent Spanish, Italian, and several dialects of Southern Italy. Her annual travels to Italy focus on the culture and archaeological research.

## CURRENT EVENTS

### Radical Islam and the European Union

4 Sessions – Fridays from 3:00 PM – 4:30 PM  
September 19, September 26, October 3, October 10  
Room # 201

This course will examine the role of the European Union with regard to the growth of radical Islam in Europe. It will start with the response to the Arab oil embargo in 1973, then examine a range of current issues: the substitution of the EU for traditional nation states as the focus of political identity and loyalty; the EU's efforts, particularly since September 11, 2001, to combat terrorism; the impact of further EU integration under the Treaty of Lisbon; EU foreign and defense policy; and Turkey's application to join the EU. While designed as a follow-on to "Radical Islam in Europe: A Primer" offered in spring 2008, OLLI members who did not attend that course are also welcome.

**Leslie S. Lebl** writes, lectures and consults on foreign policy, including transatlantic relations, European defense and counter-terrorism policy, and radical Islam in Europe (see [www.leslielebl.com](http://www.leslielebl.com) and her blog, [www.leslielebl.blogspot.com](http://www.leslielebl.blogspot.com)). She is currently working on a study of Muslim extremism and the European Union. A former foreign Service Officer, she was minister-counselor for political affairs at the U.S. mission to the European Union in Brussels, 2000-2003, and political advisor to commanders of the NATO stabilization force in Bosnia-Herzegovina in the late 1990s. A returning OLLI presenter, she has an MA from Johns Hopkins School of Advanced International Studies and a BA from Swarthmore College.

## GENEALOGY

### What Branch Are You From? Researching Your Family Tree.

8 Sessions – Fridays from 10:00 AM – 11:30 AM  
September 19, September 26, October 3, October 10, October 17, October 24, October 31, November 7  
Room # 218 (October 10 class in #317 and November 7 class in #102)

Do you want to know more about your family history but don't know where to start? Then this is the course for you! It will focus on the fundamentals of genealogy. Members will learn how to organize, use and properly record information on family group sheets and pedigree charts. Research will include the use of vital, church, census, immigration, and military records. A variety of sources will be investigated including use of the Internet. A special Saturday trip to the Connecticut State Library's Department of History and Genealogy will be arranged.

**Polly S. Gunther** is a self-taught genealogist. She has been researching and unraveling her family's history for about five years. She is a member of the Connecticut Society of Genealogists, Connecticut Professional Genealogists Council, The New England Historic Genealogical Society, Godfrey Memorial Library and The Society of Mayflower Descendants of the State of Connecticut. She is presently serving as the registrar for her chapter of the National Society Daughters of the American Revolution. She is a recently retired teacher, having taught for 34 years at the elementary level and is a returning OLLI presenter.

*"A wonderful program! So happy to have found it. I look forward to Fridays."*

Some courses have required and/or recommended reading. The UConn Co-op bookstore welcomes OLLI members and carries a supply of most required or recommended books. OLLI members are also entitled to join the Co-op OLLI Book Club to save money on their book purchases.



## HEALTH AND WELLNESS

### Food to ~~Die~~ Live For

8 Sessions – Fridays from 1:15 PM – 2:45 PM  
September 19, September 26, October 3, October 10,  
October 17, October 24, October 31, November 7  
Room #102

Learn nutritional facts, special recipes, cooking instructions and enjoy food samples. The first four sessions are “Food for Life,” sponsored by The Cancer Project. Some topics are low-fat foods, favoring fiber, discovering dairy alternatives, replacing meat, and planning healthy meals. Learn how certain foods and nutrients work to promote or discourage cancer growth. The second four weeks will cover grains, proteins, deciphering the nutritional facts label, and practical nutritional strategies for good health. A trip to a local supermarket to see healthy food will be included. Some food items will be donated by New Morning Natural and Organics in Woodbury, CT.

**Jane Sirignano** has been a cooking instructor with The Cancer Project for three years and has taught OLLI classes since the inaugural session. She has a diploma in nutrition, has been a cook in a natural foods restaurant, and managed a natural foods store. She conducted food shopping tours while working with The Coronary Health Improvement Project and her tour was considered one of the most valuable aspects of the program.



### The Seven Emotions of Health and Illness in Chinese Medicine

8 Sessions – Fridays from 3:00 PM – 4:30 PM  
September 19, September 26, October 3, October 10,  
October 17, October 24, October 31, November 7  
Room # 326

Traditional Chinese Medicine recognizes the emotions as being primary factors that can assist the maintenance of health or contribute to disease within the human body. This course will explore the seven emotions of fear, fright, anger, panic, worry, sadness, and sorrow through the principles found within this Eastern form of medicine. The duality, origins, and manifestations of these emotions will be examined and discussed in relation to the individual's health and well being. The class will be encouraged to contribute their emotional experiences which will be explored in relation to the fundamentals of Traditional Chinese Medicine.

**William Courtland** is a teacher, lecturer and workshop facilitator who researches Chinese Medical theory and its mind-body relationship. A returning OLLI presenter, he is currently a faculty member at the Connecticut Center for Massage Therapy in Westport, where he teaches Acupressure and the theory of Traditional Chinese Medicine. He is also a Nationally Certified Licensed Massage Therapist.

### Harlem Stories: A Journey Through Harlem's Past

4 Sessions – Fridays from 10:00 AM – 11:30 AM  
September 19, September 26, October 3, October 10  
Room # 217 (September 19 class in #119)

Through a short documentary and discussion, this course will explore three stories from historical Harlem and the impact that Martin Luther King Jr., Malcolm X, and modern day pioneers have had on the community. Harlem is best known for the Apollo Theatre and the Cotton Club. Discussions will cover the impact that Harlem has had in America and the entertainment world.

**Franchone Bey** is a writer, singer, dancer and producer. A native New Yorker, she studied dance, classical piano, and violin. While attending the University of Las Vegas, she produced and hosted a weekly talk show. Since then she has performed in numerous productions, has worked as a newspaper reporter in television news production, and entertained on stage for over 30 years. She is currently the artistic director for OBey Theater Group. Franchone holds a Masters degree in Journalism and Media Studies from Quinnipiac University and is a returning OLLI presenter.

### Jewelry Archaeology: From the Ancient to the Moderns

8 Sessions – Fridays from 1:00 PM – 2:45 PM  
September 19, September 26, October 3, October 10,  
October 17, October 24, October 31, November 7  
Room # 210

Jewelry Archaeology influences the styles and traditions of today's jewelry. This course highlights the connection of all jewelry, whether precious or fashion jewelry, to the art and usage in ancient civilizations. Topics in this course will include: the history of jewelry; a brief background of the Etruscan, Roman, Greek, Egyptian, Scythian, Mesopotamian, and Meso and South American cultures; the lore of gemstones; and the symbols and meanings associated with each. Questions to be explored include: Why do we wear jewelry? For vanity, luxury, or expressive art form? Participants will experience slide presentations and lively discussions around these topics.

**Connie Tripodi** is a returning OLLI presenter and also teaches **Conversational Italian for Travel**.

### Castro's Cuba

7 Sessions – Fridays from 3:00 PM – 4:30 PM  
September 19, September 26, October 3, no class  
October 10, October 17, October 24, October 31,  
November 7  
Room # 318

Communist Cuba has long been a political irritation for the U.S. government. Despite the Treasury Department's 45-year trade embargo on Cuba, Fidel Castro remains iconic to many Cubans. This course examines those defining events that have shaped U.S.-Cuban relations since the early 1960s, with special emphasis on the Bay of Pigs Invasion, the Cuban Missile Crisis, the Collapse of the U.S.S.R., and Cuba today.

**Bill Blair** is a native of Waterbury and has previously taught “Shakespeare Matters” and “Post WWII Genocides” in the OLLI program. He has a BS and an MS in English, and a BA in Anthropology. Bill currently is an adjunct instructor at Naugatuck Valley Community College. In addition to his writing of literary criticism, he is a political freelance journalist who has visited Cuba three times.

### The American Revolution – 1763 to 1781

8 Sessions – Fridays from 10:00 AM – 11:30 AM  
September 19, September 26, October 3, October 10,  
October 17, October 24, October 31, November 7  
Room # 327

This course will focus on key events from 1763 to 1781 with special emphasis on the heroes and heroines sung and unsung. Learn the truth behind the myths of our American Revolution – the truth is far better than the fiction.

**Penny O'Connell** has a BA in Political Science from Skidmore College. She is a retired high school history teacher with a broad view of world history, having taught courses on the Ancient World, European and American history. She has spent years trying to unravel the mysteries of our historical past and is delighted to share her discoveries with those who have inquiring minds. Penny is a returning OLLI presenter.

## LITERATURE AND WRITING

### Creative Expression Through Poetry

4 Sessions – Fridays from 1:15 PM – 2:45 PM  
September 19, September 26, October 3, October 10  
Room # 318

This hands-on course will enhance the skills of members interested in writing or understanding poetry. The four elements of a poem – image, diction, rhythm and form – will be covered. The practicing poet will learn to take the reader through a moment of experience to a moment of insight, using images and metaphors the way a musician uses sound. The presenter will help members assemble the images needed to convert words into passionate encounters, into land and seascapes, sunrises and sunsets, and at best into a magic mirror in which the reader can see his or her true self.

**Dr. Alvin Laster** is a freelance writer of op-ed articles for local newspapers and a widely published award-winning poet. He has lectured widely on poetry and has done readings in schools, colleges and libraries. A collection of his work was published by Northwoods Press in 1988. He is a member of the Academy of American Poets and past President of the Southbury Branch of the Connecticut Poetry Society. He earned a BS from Rutgers University and a DDS from St. Louis University.

### “Poetry, I, too, dislike it, but....”

4 Sessions – Fridays from 10:00 AM – 11:30 AM  
October 17, October 24, October 31, November 7  
Room # 318

This is a course for those who are suspicious of poetry and who may wonder why anyone would read it. Hopefully, as we go through a brief history of poetry through the ages and begin to see why poets wrote the poetry they did, it will begin to make more sense. The course will concentrate on reading poems for enjoyment – not interpretation! The main emphasis will be on modern poetry and how it has come to be and how poets try to communicate their thoughts and feelings in unique ways. Members might even try creating their own poetry.

**Robert Grady** received a BA in Psychology/English from UConn, an MS in Education from CCSU and a Sixth year Certificate in Counseling from Fairfield University. He was awarded an NDEA grant to attend an English Institute at Carleton College in Minnesota. He started teaching at the elementary level in Waterbury and left to become part of an innovative teaching program in Watertown. He retired from the English Department at Watertown High School after thirty five years of teaching. He is a member of many professional organizations including Poetry.Org.

### Poetry of the Romantic Era

4 Sessions – Fridays from 1:15 PM – 2:45 PM  
October 17, October 24, October 31, November 7  
Room # 327

Explore the work of these famous English poets: Wordsworth, Blake, Byron, Keats and Shelley. Find the messages in these beautiful poems: *I Wander Lonely as a Cloud*; *Tyger*; *La Belle Dame Sans Merci*; *To A Skylark* and *She Walks in Beauty*.

**Penny O'Connell** also teaches **The American Revolution** and **Mary Magdalene and Renaissance Art**.

*“I can't wait for the next semester to try other courses. I love everything about the concept and execution of the entire program and the OLLI Café presentations have been outstanding.”*



## Mythic Themes in American Literature

8 Sessions – Fridays from 1:15 PM – 2:45 PM  
September 19, September 26, October 3, October 10, October 17, October 24, October 31, November 7  
Room # 218

This course is a literature course, since the material to be analyzed is literature. At the same time, it is a cultural studies course, since it focuses on society's belief systems, on our search for meaning in human experience. We will explore the human dependence on symbols and myths to create existentially nourishing belief systems. After the general introduction to myth, we will focus on some mythic themes in American Literature which have both shaped and expressed the American experience.

**James F. Farnham** is Professor Emeritus of Literature at Fairfield University. He holds a PhD from Case-Western Reserve University and held post-doctoral fellowships at Yale in Cognitive Anthropology and in Judaic Studies. A returning OLLI presenter, Jim has taught Existential Literature and American Romanticism and has published studies of Hawthorne, Melville, Faulkner, and Flannery O'Connor.

## Writing As Transformative Art

8 Sessions – Fridays from 10:00 AM – 11:30 AM  
September 19, September 26, October 3, October 10, October 17, October 24, October 31, November 7  
Room # 323

This course in transformative art is a creative writing course. Its main objective is to allow members to write freely whatever is important to them in order to discover themselves in a special way. Participants will read short models of such writing and then use free writing, meditation, and creative writing techniques to help express creativity in memoirs, stories, and poems. The healing result of this process can result in understanding, playfulness, and often joy.

**Dorothy Sterpka** is a teacher, writer, and volunteer social worker. She taught English for over 30 years at UConn Hartford and now teaches at CCSU. She received an MSW at the UConn School of Social Work in 1999 and uses that knowledge to work with children and older adults. Dorothy is especially interested in the healing power of art and continues to attend seminars in art therapy, writing as therapy, and psychodrama.

## This I Believe

8 Sessions – Fridays from 1:15 PM – 2:45 PM  
September 19, September 26, October 3, October 10, October 17, October 24, October 31, November 7  
Room # 204

In the early 1950s, Edward R. Murrow hosted *This I Believe*, a daily radio program reaching thirty-nine million listeners. Fifty years later, NPR and *This I Believe* are again inviting Americans of all ages and all perspectives to examine their belief systems through personal essays. This course (with reading and writing assignments) will encourage members to explore and share their beliefs through reading and writing short essays, as well as in writing and editing their own work. In addition, those who wish to are encouraged to submit their essays to *This I Believe* for consideration as part of the national radio series.

**Alison Mead** is a graduate student in Wesleyan University's Master of Arts in Liberal Studies program where she is pursuing a concentration in Social Science. She has also studied memoir writing, as well as landscape and portrait photography, using each medium to tell her own personal stories. She is currently conceptualizing a project which will combine both fields to create a more complete self-narrative. Alison has also worked at UConn Storrs in Admissions and Continuing Studies.

## Writing the Novel You've Always Dreamed of Writing

8 Sessions – Fridays from 3:00 PM – 4:30 PM  
September 19, September 26, October 3, October 10, October 17, October 24, October 31, November 7  
Room # 210

Each of us has a novel inside. If yours is itching to get out, this practical writing course will explain how to begin with action that "hooks" your readers, the role of plot, setting, characters, dialogue and point of view, and the essential balance of show vs. tell, and of details vs. the broad stroke. The final class will stress rewriting and working with a professional editor.

**Jack Lander** is the published author of three nonfiction books, fifty one papers, and for the past twelve years has written a magazine column for inventors. A former OLLI presenter, Jack also works full time as a mentor to creative entrepreneurs and inventors and, at "seventy-something", has no plans to retire. In his corporate life as

a mechanical engineer, he patented eleven inventions, most on laparoscopic surgical instruments. He is presently writing patents on two of his own inventions, and a fourth book on marketing inventions.

## MATH AND SCIENCE

### From the Pyramids to Plato to Pine Cones: The Phi-losophy of the Golden Ratio

4 Sessions – Fridays from 1:15 PM – 2:45 PM  
September 19, September 26, October 3, October 10  
Room # 207

This course is a mathematical analysis of the "golden ratio," known as phi, a concept that can be found in nature and various aspects of life. It has been part of the world's culture from ancient Egypt and Greece to modern times. The number of spirals in a pinecone, the spiral growth of mollusks, and Da Vinci's "The Annunciation" all share a relationship to the Golden Ratio. A basic knowledge of fractions and simple geometric shapes is all that is required.

A Waterbury native, **Rosalie Griffin** received a BA in Mathematics from Albertus Magnus College and an MALS from Wesleyan University. She taught mathematics for 35 years at Crosby High School in Waterbury and presently serves as an adjunct instructor at Naugatuck Valley Community College. A returning OLLI presenter, Rosalie also provided professional development for teachers as a consultant for the Connecticut Academy of Education in Math and Science.

### Teaching Old Pros New Math Tricks

4 Sessions – Fridays from 1:15 PM – 2:45 PM  
October 17, October 24, October 31, November 7  
Room # 207

Come and have some fun with Texas Instruments' graphing calculator and learn about math in a new way. Real-world applications of algebra and geometry will be presented. Using the power of visualization, this technology has enabled students to "see" mathematics more clearly and to explore the implications of various mathematical concepts. A knowledge of basic arithmetic principles is the only prerequisite to experience these technological advancements. Calculators will be provided for use in class and students from the Waterbury Arts Magnet School (WAMS) may serve as class assistants.

**Rosalie Griffin** also teaches **From Pyramids to Plato to Pine Cones: The Phi-losophy of the Golden Rule.**

### Planets, Planets and More Planets!

4 Sessions – Fridays from 10:00 AM – 11:30 AM  
October 17, October 24, October 31, November 7  
Room # 207

From the time when the peoples of ancient civilizations became aware of "wandering stars" to the time of the recent discoveries of celestial bodies orbiting other "fixed stars," our understanding of the nature of planets and of planetary systems has steadily improved. Members will trace the historic discoveries of the planets of our own solar system, learn about satellites, asteroids, comets, how planets and planetary systems formed and how they evolve. Are there other planets like Earth which could possibly harbor life as we know it?

**Dr. Arnold M. Heiser** is an Emeritus Professor of Physics and Astronomy, belonging to the American Astronomical Society, International Astronomical Union and Astronomical Society of the Pacific. A graduate of University of Chicago, he has been a Director at Vanderbilt Observatories, was an outreach volunteer at the Dyer Observatory, a NASA Faculty Fellow, and is a published author.



## MUSIC

### History and Development of the Orchestra with the Waterbury Symphony Orchestra

4 Sessions – Fridays from 8:15 AM – 9:45 AM  
September 19, September 26, October 3, October 10  
Room # 102

This course will explore aspects of the orchestra's historical development from the Renaissance, Baroque to the Classical period, the instruments and instrumental families, and the acoustical properties of the instruments and how composers use color for effect, particularly in program music. Members will meet a musician from the WSO, and hear a brief performance. The course will include attendance at a WSO concert or rehearsal (with no additional charge).

**Leif Bjaland** is currently Waterbury Symphony Orchestra Music Director and Artistic Director and Conductor of the Florida West Coast Symphony. Leif has previously served as Assistant Conductor of the San Francisco Symphony and Resident Conductor of the New World Symphony. He began his musical career as a Professor of Music at Yale University, where he served as music director of the Yale Symphony Orchestra. Maestro Bjaland holds a Master's Degree in Music from the University of Michigan.

**Fran Goldman** is the Executive Director of the Waterbury Symphony Orchestra and previously held a similar position with the

Jackson, TN Symphony. She has performed as a clarinetist with the Richmond, VA Symphony, the US Army Band of New England and Young Audiences of Virginia. She has taught music in public and private schools and at Hampton University, and was the Conductor of the Williamsburg Youth Orchestra. Goldman holds degrees in woodwind performance from Boston University and Norfolk State University and in Secondary Education from Old Dominion University.

**Alyce Cognetta Bertz** enjoys being the concertmaster of the Waterbury Symphony Orchestra. Her role as the lead violinist enables her to have input into the artistic development of the strings in the Symphony. She performs chamber music in addition to her solo concerts throughout the USA and Europe.

## PERFORMING ARTS

### Looking Back – Moving Forward: The Palace Theater History

*Your Palace, Your Place...for the Best in Entertainment*

4 Sessions – Thursdays from 10:30 AM – 12:00 PM  
September 18, September 25, October 2, October 9  
This course meets ON THURSDAYS at the Palace Theater (across the street from the UConn campus)

Built in 1920, the Palace Theater is known for its rich culture and Renaissance Revival architectural design style that features an eclectic mix of Greek, Roman, Arabic and Federal Motifs. Originally a movie/vaudeville house, the Palace changed with the times over its seventy years of operation and unfortunately went dark for eighteen years. It later underwent a major renovation and restoration and is considered Greater Waterbury's Center of the Performing Arts, hosting Broadway shows, comedy acts, celebrity concerts, family entertainment and much more! Members will learn about the Palace Theater's history, the architecture of the building, and the restoration process.

**Louis Belloisy** was a teenager when he started at the Palace Theater as an usher and worked his way up to doorman, candy vendor, and then projectionist. After six years, he joined the Air Force to pursue a career in aviation and is certified by the FAA to fly and teach in numerous aircrafts. He is currently a house photographer and historian for the Palace Theater and a projectionist for a multiplex theater in Torrington and a returning OLLI presenter.





## Keynotes

4 Sessions – Fridays from 3:00 PM – 4:30 PM  
 October 17, October 24, October 31 classes and  
 Saturday, November 8 performance  
 Room # 102

Keynotes will explore classical piano – including the instrument’s construction, history and unique abilities, plus classical piano music and its evolution. The course will focus on specific pieces of repertoire that will be performed live at a Thomaston Opera House concert as part of the Classical Piano Series. As the final class meeting, members may attend the Thomaston Opera House piano concert (at a discounted price) with renowned pianist Joseph Kalichstein at 8:00 PM, on November 8, and attend the post-concert talkback.

**The Thomaston Opera House** has been presenting a full season of musical theater since 1991 and the Classical Piano Series for six years. OLLI’s Thomaston Opera House guest presenters will include the Opera House’s Executive Director as well as professors from area colleges and professionals in the classical music field.

## Dance for the Love of It!

6 Sessions – Fridays from 10:00 AM – 11:30 AM  
 September 19, September 26, October 3, October 10,  
 October 27, October 24  
 Room #102

This movement course will take a look at the positive effects dance has on our well being: mind, body and soul, and the health benefits derived from social dancing. It will cover how dance impacts our culture and social environment, the different styles of dance over the decades – from the 1920s to the 1980s – along with studying the artists who made these social dances popular, such as Fred Astaire and Gene Kelly.

**Donna Bonasera** is the founder and Artistic Director of CT Dance Theatre, Inc. She is one of few Americans to receive a diploma in the Vaganova Method of Classical ballet while studying in Russia and was awarded a scholarship to study at the American Dance Machine which preserves the original choreography of Broadway Musicals and film. She is the state director for National Dance Week and is recognized nationally and internationally for training high caliber dancers and for her choreography for both musical theatre and ballet. Many of her students have gone on to dance professionally in ballet companies throughout the world and are featured performers on Broadway and film.

## Acting 101 – How to Conquer Your Inhibitions!

7 Sessions – Fridays from 1:15 PM – 2:45 PM  
 September 19, September 26, October 3, October 10,  
 October 17, no class on October 24, October 31 and  
 November 7  
 Room # 217 (September 19 class in #119)

Do you harbor hidden desires to let your inner character(s) out? This practicum includes voice and movement, theatre games, and improvisation, culminating in a performed monologue of your choosing. Watch your communication skills and self-confidence grow through the process. If this clicks for you, we may see you in that next community theatre production.

**Richard Reimold** is Professor Emeritus of the Theatre Arts Department at Western Connecticut State University. He founded the Theatre Department at Western in 1970. Along with an MA from New York University, his studies include acting training from Yale University, Northwestern University, and H.B. Studio in New York City. He has

performed in major dramatic roles and in musicals in professional summer stock and in numerous educational theatres. He is an active member of Actors’ Equity and Screen Actors Guild.

## PERSONAL DEVELOPMENT

### Living Funnier

4 Sessions – Fridays from 10:00 AM – 11:30 AM  
 September 19, September 26, October 3, October 10  
 Room # 213

A participatory experience with humor and comedy from the 1920s to the present. The course will review movies, television, stories, and jokes; bring your own materials, or just bring your sense of humor.

**Bob Blake** taught for 34 years in the Waterbury school system and retired with an intact sense of humor. A BA from UConn and an MS from Southern Connecticut State University in no way detracts from his willingness to present this overview of humor.

## PHILOSOPHY & RELIGION

### Buddhism is Not What You Think

8 Sessions – Fridays from 8:15 AM – 9:45 AM  
 September 19, September 26, October 3, October 10,  
 October 17, October 24, October 31, November 7  
 Room # 207

This OLLI course offers a clear, straightforward look at the wisdom and guidance of an enlightened teacher who lived some 2500 years ago but whose teachings remain as vital and penetrating today as ever. It provides an overview of Buddhism’s essentials, free of the fetters and cultural trappings that have accumulated over 25 centuries. This course is designed for every person with a desire to see deeply into the nature of existence. It is a call to awakening. When the Buddha was asked to sum up his teachings in a single word, he said, “Awareness.”

**Pierce Reignier** participated in behavioral studies and rehabilitative counseling classes. He has been studying and practicing meditation and Tai Chi’s mindful movements for over 11 years. He has studied with the Vietnamese Zen master, Thich Nhat Hanh, and has taught at the International Buddhist Retreat Center in New Hartford. Pierce runs Stillwater Meditation Center in Wolcott, which offers Tai Chi, Meditation and Yoga. Pierce is also a returning OLLI presenter.

## VISUAL ARTS

### Mary Magdalene and Renaissance Art from “The DaVinci Code”

4 Sessions – Fridays from 1:15 PM – 2:45 PM  
 September 19, September 26, October 3, October 10  
 Room # 327

Look at DaVinci’s *Last Supper* and *Virgin of the Rocks*, Botticelli’s *Primavera* and *Birth of Venus* along with Jan Van Eyke’s *Arnolfini Marriage* and see for yourself if you can solve the mystery of Mary Magdalene and the female principle. Enjoy the discussion and view framed prints of these paintings.

**Penny O’Connell** also teaches **The American Revolution** and **Poetry of the Romantic Era**.

### Not Just a Pretty Picture: Before, During and After Impressionism

4 Sessions – Fridays from 1:15 PM – 2:45 PM  
 September 19, September 26, October 3, October 10  
 Room # 326

Vast social changes after the French Revolution resulted in new attitudes and practices in Art: Neoclassicism (David, Ingres); Romanticism (Delacroix, Gericault); Realism (Corot, Courbet). Traditional academic art continued through the century, but ceded leadership to new styles, especially the artists who came to be known as Impressionists: Monet, Morisot, Renoir, Pissarro and Sisley. However, many other artists explored highly individual styles in the later 19th century: Degas, Manet, Van Gogh, Cezanne, Gauguin, Seurat, Bonnard, and



Vuillard. The Nabi, Fauves and Expressionists built on all these styles and anticipated the radical innovations of Cubism and Abstraction in the early 20th century.

**Dr. Virginia L. Bush** attended Wellesley College, received her PhD from Columbia University and is a Fellow of the American Academy in Rome. She has taught in New York, New Jersey, and Connecticut. She has authored articles on Italian Renaissance art history and modern art and has worked in art galleries and art administration. Her travels throughout the U.S. and Europe have resulted in a collection of nearly 30,000 art images. She has also been a presenter in the OLLI program.

### Visual Memoirs: Painting From Memory and/or Imagination

8 Sessions – Fridays from 8:15 AM – 9:45 AM  
 September 19, September 26, October 3, October 10,  
 October 17, October 24, October 31, November 7  
 Room # 318

Using references when applicable, members will create works from memory and/or imagination with either oil or acrylic paint. Writing or interpreting passages from prose or poetry may be some exercises used to elicit visual images. Expressive and meaningful works of art will be the end result. A variety of painting techniques will be reviewed, and verbal participation will enhance the experience, along with one-on-one help from the presenter. Note: drying time for oil paints can be very long. If that is a consideration, members may elect to use acrylic paint, which dries in a relatively short time. Enrollment is limited.

*“OLLI has been a very rewarding experience – every part of it – the classes, lunch and learn speakers, staff and instructors.”*

**Maryellen Considine, Ed.D** has been a member of Ward-Nasse Gallery in NYC since 1987. Her work has also been exhibited throughout Connecticut, New York and North Carolina. She studied at SCSU, Paier College of Art, The School of Visual Arts and the Art Students’ League. She holds a BS, MS, and Sixth Year. She earned a doctorate in art education with a concentration in painting from Columbia University. She has been an art instructor for more than 30 years and has taught at Wilby High School in Waterbury and SCSU in New Haven.

## Four Surrealists

8 Sessions – Fridays from 8:15 AM – 9:45 AM  
 September 19, September 26, October 3, October 10,  
 October 17, October 24, October 31, November 7  
 Room # 323

Two class sessions will be spent on discussions of the following artists: Jean Arp, Joan Miro, Rene Magritte, and Salvadore Dali. After defining surrealism as a form/school/period of Modern Art, we will examine how each of these artists applied the principles so as to gain a better understanding of this period and its continuation in the present art complex.

**Richard J. Kupstis** earned a MSS in American History from CCSU and a BA in Sociology from the University of Connecticut. He is a retired secondary art teacher and is certified in History and Social Studies. He taught at Wolcott High School for 34 years. A former OLLI presenter, Dick is a practicing artist and potter, has been a member of Wesleyan’s Potters since 1980 and is a member of the Meriden Arts and Crafts Association and the Brownstone Group – a critique group.



A venue for the exchange of ideas and experiences focusing on improving the quality of life. The goal of OLLI Café is to have presentations and activities with themes such as Health and Wellness, Arts and Culture, and Current Events.

Bring your lunch and we will provide the coffee and fruit! OLLI Café presentations are open to all OLLI members. **These are not courses. Pre-registration is not required.** The weekly event features a guest speaker followed by a short Q&A session.

**Fridays—Room #113 • 11:30 – 12:00 Lunch • 12:00 – 1:00 Speaker Presentation**



**September 19, 2008**  
**Contemporary Connecticut – What's New in Art**

In fall 2008, the Mattatuck Museum will present an exhibit of Connecticut art, showcasing new, emerging artists. In preparation for the exhibit, a team of artists and museum directors scoured the state in search of new talent and new artistic direction. This presentation will include images of works in the exhibition and a discussion of how the show was developed. OLLI members are invited to attend the free opening reception at the Mattatuck on Thursday, September 11, 2008 from 5:30 – 7:30 PM.

**Cynthia Roznoy, PhD** is curator at the Mattatuck Museum. Previously she was an independent art consultant, taught art history at UConn Stamford and was director/curator at the Whitney Museum of American Art in Stamford. She has participated on several arts councils, grant panels, presented numerous art exhibitions, and has authored arts publications and presentations. She holds degrees from the Graduate School of the City University of New York, Hunter College and Fairfield University. Cynthia is also a member of the American Association of Museums, College Art Association, and the New England Museum Association.

**September 26, 2008**  
**Growing Old Tastefully – a Trip to the Cheese Caves of France**

The diversity of flavor in French cheese is due partly to the micro-organisms growing naturally on cheeses during the ripening process. Having spent four years in France doing doctoral research in dairy microbiology, Sister Noella will present results from her study. Enjoy slides of the cheese makers, land and animals, and learn the history of the regions where cheeses are produced, including images of Saharan rock art depicting scenes of prehistoric dairying dating back to 4000 B.C.

**Sister Noella Marcellino** is a Benedictine nun at the Abbey of Regina Laudis in Bethlehem, Connecticut, where she began making the Abbey's cheese in 1977 using an ancient technique taught to her by a native of France. Pursuing a doctorate in Microbiology in the Department of Molecular and Cell Biology at UConn in 2003, she traveled extensively through traditional cheese-making regions in France collecting native strains of cheese-ripening fungi to access their biochemical and genetic diversity. A documentary film about this journey, *The Cheese Nun*, was produced by the Paris American Television Company and has been shown at film festivals and nationally on PBS.



**October 3, 2008**  
**Straight From a Woman's Heart**

This is the story of a very special patient who inspired the Director of Cardio-Pulmonary and Critical Care Services at Saint Mary's Hospital to change the way she thought about her profession and herself. This talk focuses on a life-changing moment that challenged our speaker's views on exercise and heart disease, stroke, open heart surgery, and the afterlife. This story promises to inspire others to make a life change or overcome a personal challenge in their life.

**Josie Soucy, RN, MSN, CCRN, CNA**, Division Director of Cardio-Pulmonary and Critical Care Services at Saint Mary's Hospital, has more than thirty years of experience in the healthcare field. Josie is a healthcare leader with an MS in nursing. She has directed the operations of the New Hampshire Heart Institute and several Emergency Operations as well. Her experience provides distinctive leadership combined with several years of experience in patient-focused care operations with expertise in strategic planning.

**October 10, 2008**  
**A Surgeon Looks at the Physical Death of a Man Called Jesus**

Drawing from art, literature, history and archaeology, this illustrated talk discusses the various mechanisms involved in the physical death of the man called Jesus of Nazareth. A discussion of scourging and crucifixion, its history and methods will be presented in lay terms together with what we know of the physical causes of death by such mechanisms. This is not a religious topic, although several photographs of crucifixes are employed to illustrate the wounds resulting from the practice of crucifixion.

**Dr. Raymond Sullivan** practiced general surgery in Waterbury for almost 30 years. He has an intense interest in history, particularly as it relates to medicine and surgery. Dr. Sullivan has been an OLLI presenter for the past two years, offering courses on New England History and Democracy. He has presented this topic before various groups throughout Connecticut and Massachusetts.

**October 17, 2008**  
**Money Follows the Person (MPR)**

Do you have an elderly or disabled loved one residing in a nursing home? In 2006 Joseph Stango proposed "Money Follows the Person" (MFP) to the state legislature with the hope of bringing his mother home to live her remaining years with him. Under this new program, signed into law in 2006 and expanded in 2008, a person who qualifies for Medicaid and who is residing in a nursing home can come home and receive services as opposed to having to stay in a nursing home. This will allow disabled persons of any age to live independently and surrounded by their loving family – a health care incentive ultimately less expensive for the state of Connecticut.

**Joseph Stango** is currently a Vice President and Financial Advisor with Merrill Lynch. He also served in management as a Resident Director with Merrill Lynch. Along the way, he has been a published columnist, a business and financial talk show host and a Financial Analyst and Commentator for many state radio stations including Waterbury's WATR. He has also lectured at the University of Rhode Island on Financial Planning and has held charitable roles throughout greater Waterbury.

**October 24, 2008**  
**In Search of Charles Island, Milford, CT**

Hear the historical account of Charles Island, a small island off the coast of Milford, Connecticut that was discovered by Adriaen Block in 1614, reputedly used by William Kidd as a burial site for part of his treasure, home to a 19th century summer resort, a tranquil setting for a Dominican Retreat in the 1930s, and now a nature preserve. Waterburians vacationed in Milford since the 1850s and Waterbury's Pritchard family owned the island during its heyday as a resort. Elizur Pritchard was a button manufacturer and bought the island in 1852.

**Michael Dooling** has been a collector and dealer of rare books and manuscripts for thirty years. He turned his avocation for rare books into historical writing, using his book collection for source material. He is the author of *An Historical Account of Charles Island* and articles in *The Log of Mystic Seaport*, *Naval History*, etc. His book was nominated for the Homer D. Babbidge Award for best work on Connecticut history published in 2006. He has an MA in Psychology and worked for thirty years in consumer research. He is the Librarian and writes for the Republican-American newspaper.



*Zoe appears through the Courtesy of Sesame Workshop ©*

**October 31, 2008**  
**Type 2 Diabetes – What is it and How Does One Cope With it?**

Type 2 Diabetes, becoming frequent in adults aged 50 and older, is the most common form of diabetes affecting over 90% of the 20 million Americans with diabetes. Understanding this illness is the key to managing it. The presentation will include information on causes, risk factors, warning signs, and prevention tips. Learn about the symptoms, diagnosis and tests, treatment and care, living and managing diabetes, and available support resources.

**Dr. John Testa** is a private practice physician at Greater Waterbury Primary Care Associates in Prospect. He holds a BA from Quinnipiac University and his MD from Ross University. He is currently an assistant clinical professor of medicine at the UConn School of Medicine and a clinical instructor of medicine at the Yale University School of Medicine. Dr. Testa has conducted research on Type 2 Diabetes for over ten years. In 2007, he received the Diabetes Physician Recognition Award by the National Committee of Quality Assurance in recognition for excellence in diabetes care and America's Top Physicians Award by the Consumers Research Council of America for excellence in internal medicine and diabetes.

**OLLI Appreciation Event**  
**November 7, 2008 11:30 AM - 1:00 PM**

OLLI Café today is the OLLI Appreciation Event to honor OLLI presenters. Please come and support the dedication and volunteerism of our presenters!



# Being a Course Presenter

for the Osher Lifelong Learning Institute (OLLI) at the University of Connecticut, Waterbury Campus

OLLI Courses are generally led by retired, semi-retired and working educators, professionals, entrepreneurs, artists, writers, and others.

- Share your passion on a topic or set of topics
- Inspire others to learn and explore
- Engage with peers and community members
- Lead learners without the administrative burdens of traditional teaching (reading papers/homework, calculating grades, etc.)
- Develop innovative, interesting, and compelling learning experiences
- Utilize the campus infrastructure to deliver enriching experiences for older adult learners and yourself—without the pressures of homework or testing
- Explore topics with other learners and create a laboratory for new ideas
- Join a national movement of adult learners at the first Osher Institute in Connecticut

#### Some of the perks . . .

- free Basic OLLI membership
- reasonable supplies and equipment for course instruction
- UConn Waterbury Friday parking pass
- Recognition event
- Presenter Honoraria

## LOOK AT THE NEW OLLI OPPORTUNITIES FOR 2009!!!

Spring 2009 session, Fridays from March 20, 2009 – May 15, 2009 (no classes April 10).

June Session 2009, Monday through Thursday! June 1 – 26, 2009

Deadline for course proposals – November 28, 2008

Please contact us if you would like to present a Spring or Summer 2009 course!

## ANNOUNCING ANOTHER OLLI FIRST!

# musica Scolara

The Chorus of UConn Waterbury and the Osher Lifelong Learning Institute

14 Sessions

Mondays 7:00 PM – 8:45 PM

September 8 – December 8

Rehearsal location to be announced

Cost for paid OLLI members to join the Chorus is \$50 per semester.

Registration forms will be provided after auditions.

**Auditions August 19 and 20, 12:00 PM - 2:00 PM, Room #102**

**Musica Scolara is the first intergenerational OLLI Chorus in the United States. OLLI members and UConn students are invited to join this premiere ensemble group.**

Students and adults interested in singing music of the masters are encouraged to schedule an audition at UConn Waterbury, August 19 & 20, 2008 from 12:00 – 2:00 PM. Call 203-236-9924

The audition/information session will include singing the National Anthem and a short song excerpt. The inaugural concert of this new university ensemble will include a Mozart Mass, a contemporary masterpiece and a gospel encore.

**Christopher Shay** made his debut at Carnegie Hall on December 8, 1989, conducting the Connecticut Choral Society and the New York Pops. Under his leadership, the Greenwich High School Chorus and the

Shepaug High School Chorus were also invited to sing at Carnegie Hall. Both were invited back, and both earned “Best in Festival” in national competitions. Mr. Shay’s choirs toured from Helsinki to Honolulu and presented critically acclaimed concerts at Chartres Cathedral in France and St. Paul’s in London. Mr. Shay served on the Connecticut Board of the American Choral Directors Association and on the Executive Board of the Connecticut Music Educators Association. Shay earned a Master of Music in Teaching (MMT) Vocal Music from Oberlin College Continuing Education in Ohio. He teaches music history at UConn Waterbury and is the choral director at Shepaug High School.



*Christopher Shay conducting the Shepaug Valley High School Choir at St. Paul's Cathedral in London on their 2005 tour of Paris and London.*

Photo courtesy of Rev. David Peters



OLLI members will receive ticket discounts for events sponsored by partnering organizations.

## THE PALACE THEATER



*Your Palace, Your Place...for the Best in Entertainment*

OLLI members may enjoy a 10% discount on Palace Theatre presentations when they show their membership card. Some restrictions may apply. Valid on ticket purchases at the Palace Box Office only. May not be combined with other discounts or promotional offers. Previous sales excluded from this offer.

Photo courtesy of Louis Belloisy



Photo courtesy of John Murray

OLLI members gather in front of the Palace, celebrating National Dance Week.

## CONNECTICUT DANCE THEATRE



Connecticut Dance Theatre offers OLLI members a 10% discount on classes in Ballroom, Pilates, and Dance Movement classes, along with a 10% discount on Fall social dances at CDT studios and the performance of Clara and the Nutcracker.

**Lindsay Parisot, 2005 graduate with partner Juan Camara**



**Clara and the Nutcracker**

December, 19, 20, 21, 2008

CDT's production is the perfect blend of youthful talent with professional guest artist. Narrated for the young and the young at heart. Close to home, close to the heart. Performances held in the beautiful Bingham Theatre, Taft School in Watertown, CT.

For more information contact Connecticut Dance Theatre



**Peggy Terhune, CDT Pilates Instructor**

**Connecticut Dance Theatre**

Classes: Six week classes  
October 6 – November 9, 2008

Educational, mentally and physically beneficial, and most important – FUN!

**Friday, October 24, 2008 – Fall Festive Social at CDT studio**

Contact Donna Bonasera at  
CDTstudio, 860-274-0004 or email:  
ctdance523@aol.com



1995 graduate Brooke Tansley  
(the longest running Belle on Broadway  
in Beauty and the Beast)

## THOMASTON OPERA HOUSE

**Ticket discount for OLLI Members. Call Thomaston Opera House at 860-283-6250.**

**THOMASTON OPERA HOUSE**  
BIG THEATRE in a Small Town  
www.thomastonoperahouse.org  
**(860) 283-6250**

**Joseph Kalichstein, Pianist**

Saturday, November 8, 2008, 8:00pm

*Some pianists stun audiences into submission with breathtaking bravura. Others, like Joseph Kalichstein stir up stormy applause with intelligent programming, eloquent musicianship, brilliant dexterity and beautiful tone."*

James Roos, Miami Herald

Joseph Kalichstein is first of all a musician, then a pianist. Music for him is a message from one soul to another. With his diverse repertoire of works ranging from Mozart, Beethoven and Brahms to 20th century works by Bartok, Prokofiev and others, Kalichstein has collaborated with various celebrated conductors such as Daniel Barenboim, Pierre Boulez, James Conlon, Christoph von Dohnanyi, and Andre Previn, to name a few. He has appeared with many of the major orchestras of the world. A favorite of New York concertgoers, Mr Kalichstein has appeared in several recitals of Carnegie Hall's "Keyboard Virtuosi" series. Kalichstein is also a formidable soloist with the Kalichstein-Laredo-Robinson Trio.



## WATERBURY SYMPHONY ORCHESTRA

**OLLI Members will receive a 20% discount. Call the Waterbury Symphony at 203-574-4283.**



**Banned Music**

Saturday, September 27, 2008, 8 PM  
Naugatuck Valley Community College  
Fine Arts Center

Mendelssohn, Beethoven and  
Shostakovich

Yevgeny Sudbin, Piano Soloist

This concert looks at music that was influenced by political and cultural forces and features one of the most exciting young pianists of our time.



**Five By Design in Club Swing**

Saturday, October 25, 2008, 8 PM  
The Palace Theater

This celebrated vocal group joins forces with the full orchestra in a celebration of the Swing Era

from 1937 to 1955. Each decade highlights the songs, events, and personalities that defined an era, from Cole Porter's *Begin the Beguine* to Prima's *Sing, Sing, Sing*.



# Events Open to the Public

Events Open to the Public include celebrations, film premiers, author talks, special lectures, and other programs.

FALL 2008

## OLLI OPEN HOUSE

Attendees will be eligible to enter a drawing for a free OLLI membership!

August 19, 2008 9:00 AM – 3:00 PM

Calling all former, current, and future OLLI Members! This event is open to the general public. OLLI members are encouraged to attend and bring their friends.

### Highlights of the Day

**9:00 AM** Coffee and Light Refreshments

**10:00 AM** *Get Ready for the Present: An Existential Consideration of Lifelong Learning* with James Farnham, PhD, OLLI Presenter and Emeritus Professor, Fairfield University.

**10:30 AM** *History Beneath Our Feet: Archaeology in the Naugatuck River Valley*, with Nicholas Bellantoni, PhD State Archaeologist with the Connecticut State Museum of Natural History and Archaeology Center at the University of Connecticut.

**12:00 PM** Bring your own lunch or enjoy a special OLLI discount lunch at participating downtown restaurants.

**12:00 PM - 2:00 PM** OLLI Chorus Auditions with Christopher Shay, Room #102



Nicholas Bellantoni

**1:30 PM – 3:00 PM** Your Choice of Three Afternoon Programs!

**Mattatuck Museum with Marie Galbraith** - *Coming Home: Building Community in a Changing World*, the Connecticut Artists Collections of works ranging from American master artists Frederic Church, J. Alden Weir, Maurice Prendergast, Milton Avery, Alexander Calder and Yves Tanguy, and Kay Sage.

**Palace Theatre with Lou Belloisy – Your Palace, Your Place...for the Best in Entertainment!** A Walking Tour of Waterbury's Most Famous Entertainment House. See the architectural designs, and hear the history of this incredibly beautiful landmark.

**OLLI Goes to the Movies, Again!** OLLI at UConn opened its doors with the Connecticut Film Premier of "Been Rich All My Life" in October, 2006. This documentary film is back by popular demand! It's the story of the Silver Belles, five tap dancers who met as dancers on stage during the Harlem Renaissance. These dynamic women performed with the great Big Bands beginning in the 1930s, went on to lead rich and interesting lives, and reunited to dance for a couple more decades after retirement!

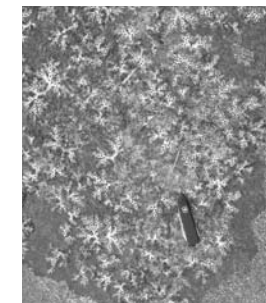
**Join us for popcorn and this great film in the UConn Multipurpose Rooms (113-119).**

Please call for more details – 203-236-9924

## UConn Waterbury Research Lecture Series

Parking in the UConn Parking Garage on days **other than Friday** is limited to degree-seeking students, faculty, and staff. Please use alternative street level or municipal parking. Pre-registration is recommended by calling 203-236-9924.

**Chemical Warfare in Plant Communities**  
Paula Philbrick, PhD  
Wednesday, September 24, 2008  
12:45 PM – 1:45 PM  
Room #333



In streams, on shores, and in the soil, chemicals released by one plant or seaweed prevent the germination or growth of another. Chemical warfare (termed allelopathy) determines the structure of communities. Evidence from field surveys and lab-based experiments suggest that *Castlenavia princeps* (a riverweed) is allelopathic, tentatively the first report of allelopathy among the riverweeds. Take a look at some fantastic habitats, and a consideration of the dynamic forces that determine what grows where (or, more importantly, what does NOT grow THERE).

**Where Are All the Honeybees?**

Alphonse Avitabile  
Tuesday, October 7  
1:00 PM – 1:45 PM  
Room #333

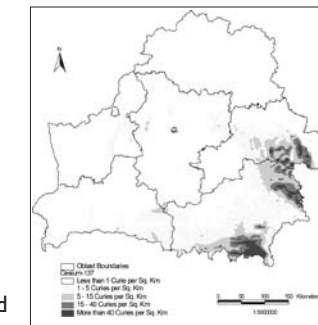
Wild colonies of honeybees are disappearing as they contend with infectious diseases, mites and colony collapse disorder. These threats are also making it increasingly difficult for beekeepers to maintain domesticated colonies. The bee problem is a major headache for agriculture, which depends on bees to pollinate \$14 billion worth of crops each year in the United States.



**New Maps of Chernobyl Contamination in Belarus**

Tatiana N. Serebriakova, PhD  
Tuesday, November 11, 2008  
1:00 PM – 1:45 PM  
Room #333

The explosion at the Chernobyl nuclear power plant in the northern Ukraine in 1986 caused the release of enormous quantities of radioisotopes that were dispersed throughout a large area of Russia, Ukraine, and Belarus. The purpose of this research lecture is to show a series of new maps depicting sources of radiation contamination associated with the Chernobyl disaster.



## OLLI BOOK DISCUSSION

The Big Read is an initiative of the National Endowment for the Arts in partnership with the Institute of Museum and Library Services and Arts Midwest. The Silas Bronson Library and numerous other organizations in the Waterbury region are also supporting this initiative. To learn more about The Big Read and other local events, visit [www.bronsonlibrary.org](http://www.bronsonlibrary.org) or [www.NEABigRead.org](http://www.NEABigRead.org).

### Big Read Book Discussion of "Fahrenheit 451"

Dr. Mark Schenker, Associate Dean, Yale University

Tuesday, October 14, 2008, 4:00 PM

UConn Waterbury, Room #119

This event is free.

Dr. Mark Schenker is returning to OLLI at UConn for the third time. OLLI is proud to be associated with Dr. Schenker, who is considered to be among the best book discussion leaders in the state and the region. He is currently an Associate Dean of Yale College and Dean of Academic Affairs. A sometime lecturer in the English Department there, he received his PhD from Columbia University in Victorian Literature. He has led book discussion series in public libraries and other venues in Connecticut for over twenty years through programs sponsored by the Connecticut Humanities Council.

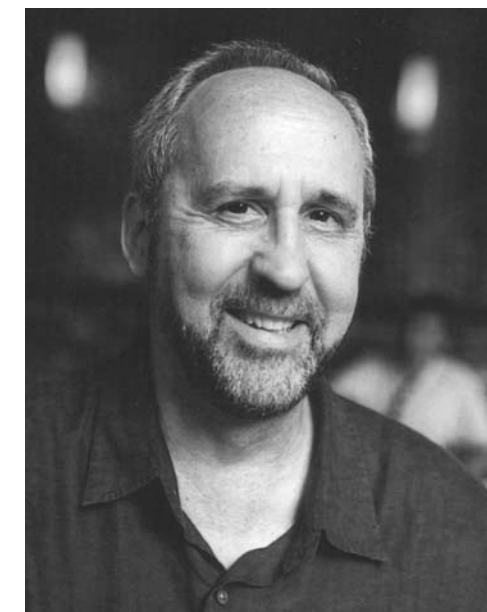


Photo courtesy of Valentin Moscaliuc

### Reading by Kurt Brown

Tuesday, October 21, 2008, 12:30PM

UConn Multipurpose room. Light refreshments will be served.

Kurt Brown is the author of six chapbooks and five full-length collections of poetry, including *Return of the Prodigals*, *More Things in Heaven and Earth*, *Fables from the Ark*, *Future Ship*, and a new collection, *No Other Paradise*, due out in 2008 from Red Hen Press.

As a poet, Mr. Brown has been likened by Baron Wormser to "a patient magician who pulls away the cover gradually. From the narrative ground of personal annals and inspired observation, he builds poems that revel in the great grace of faithful engagement."

Kurt Brown founded the Aspen Writers' Conference, and Writers' Conferences & Centers (a national association of directors). He teaches poetry workshops and craft classes at Sarah Lawrence College in Bronxville, New York, and was recently the McEver Visiting Chair in Writing at Georgia Tech in Atlanta. Mr. Brown is married to the poet Laure-Anne Bosselaar.

A native of Connecticut who now lives in New York, Mr. Brown will be touring the Connecticut Poetry Circuit from October 20 to October 31, 2008.





### Open House for Prospective Undergraduates

Saturday, October 25  
10:00am-12:00pm

Prospective students and their families are invited to explore our academic programs and learn more about financial aid and scholarship opportunities. Faculty, staff, and current students will be on hand to answer your questions.

RSVP @ [www.waterbury.uconn.edu](http://www.waterbury.uconn.edu)



### World Affairs Council – Connecticut and OLLI

The World Affairs Council is a non-partisan organization which promotes public understanding of global affairs and world issues by sponsoring programs, discussion series and seminars on international politics, business and culture. OLLI members can purchase tickets to World Affairs Council programs and events at World Affairs Council Member prices. To view upcoming programs please go to: [www.ctwac.org](http://www.ctwac.org) and to participate in this offer please call the council at 860-416-2844.

### Contact Us

For more information call 203-236-9924 or 203-236-9881. Email: [osher@uconn.edu](mailto:osher@uconn.edu) or visit our website at [www.waterbury.uconn.edu/osher](http://www.waterbury.uconn.edu/osher)

## UConn School of Business

# MBA Program



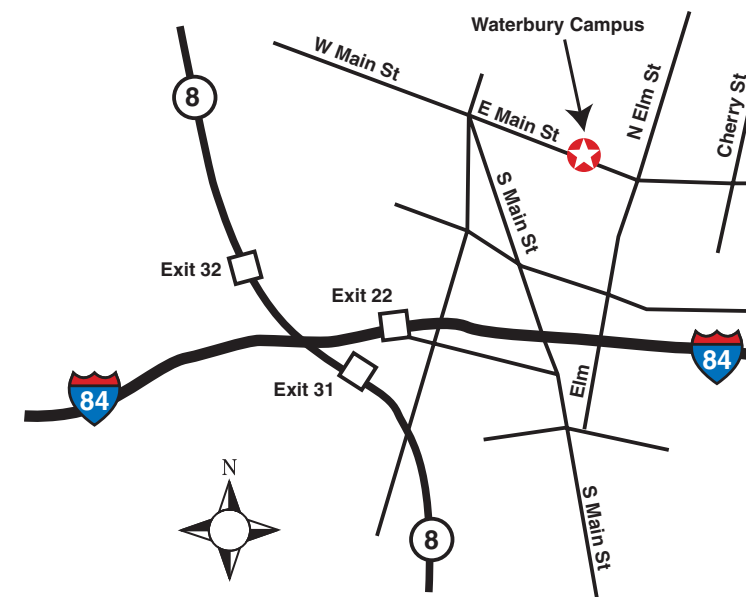
## University of Connecticut

### UConn MBA Program Open Houses in Waterbury

Wednesday, January 9, 2008; Tuesday, February 5, 2008; Thursday, March 6, 2008; Wednesday, April 2, 2008; Tuesday, May 6, 2008; Thursday, June 5, 2008; and Wednesday, July 9, 2008

Monthly MBA Program Open Houses will be held for anyone interested in UConn's Part-time, Full-time or Executive MBA programs. Information about admissions, program curriculum and concentrations of electives will be provided. Please call (203) 236-9935 or email [glen.richardson@business.uconn.edu](mailto:glen.richardson@business.uconn.edu) if you have any questions or wish to RSVP to an MBA Open House.

### Directions and Parking



The campus is located at 99 East Main Street in Waterbury, across the street from the Palace Theater. Paid OLLI members will receive a free Friday-only parking pass. Street level or municipal parking must be used for non-Friday events or when campus garage is full. Parking and directions to campus can be obtained from the website, [www.waterbury.uconn.edu/osher](http://www.waterbury.uconn.edu/osher) or by calling 203-236-9924.





The Osher Lifelong Learning Institute at UConn is guided by the OLLI Leadership Council which is the principal representative body of the OLLI membership. Composed of founding OLLI members, the Council helps foster the growth and sustainability of the Institute. OLLI members serving on standing committees, in conjunction with the OLLI Director and Program Assistant, carry out every aspect of the organization. OLLI is always seeking new members to get involved in curriculum planning, membership, public relations, hospitality, newsletter, and OLLI Café Committees. For a list of current council members and committee information please visit our website or call 203-236-9924.

The lifelong learning initiative began with seed money, market research, and technical support from the Leever and Connecticut Community Foundations. Currently, the Institute is made possible by the generosity and support of the Bernard Osher Foundation and the University of Connecticut.

The University of Connecticut's Waterbury campus serves more than 1,000 students annually. In its sixty years of operation, UConn Waterbury has opened the doors to educational access and excellence to thousands of Connecticut residents, many of whom have distinguished themselves in the fields of community

service, business, education, law and politics. Today, the campus is located in a modern, state-of-the art facility in the heart of downtown Waterbury. Our neighbors are the historic Palace Theater and a new arts magnet middle and high school, making our location a beacon for educational and cultural enlightenment. Students enjoy quality interaction with great professors and participate in research opportunities that enrich the college experience. An extensive range of undergraduate and graduate course offerings and study areas are available. Visit us online: [www.waterbury.uconn.edu](http://www.waterbury.uconn.edu).

*OLLI Photos Courtesy of Tom Kmetzo and UConn, Waterbury I.T. Department*



University of Connecticut

Osher Lifelong Learning Institute  
The University of Connecticut  
99 East Main Street  
Waterbury, CT 06702

